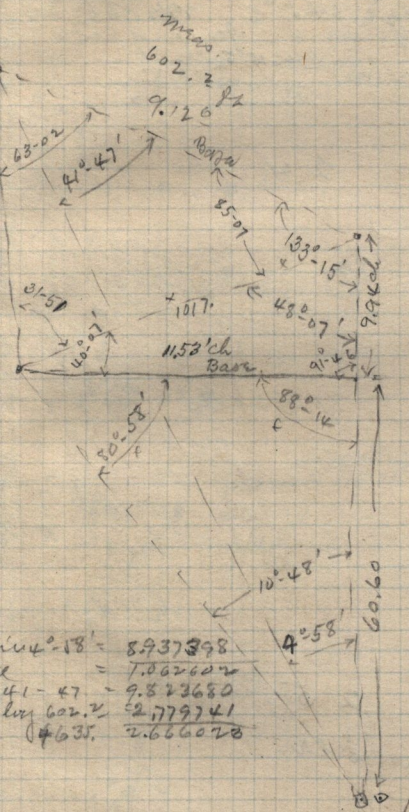


Aug 15-

0-10 E

N. bet Secs 25 & 26, descending
 11.50 chs. pg. on top of ridge S. 7. W, thence descending

Spring marked N. 50° W. 40. chs. set Boulder Stone, 15 X 8 X 10.
 marked 14 on N. pg. ca on ridge N. 50° W. thence descend.
 53, bottom S. branch of Harris' Cañon, S 30° W. 91, 80° E. 53, ascend
 72.95 chs. on ridge N. 51° E, descend, 78.00 bottom ravine W,
 80, chs. set Boulder Stone 14 X 8 X 8. of in to ground for
 cur. mid Stone.



ac log sin 91° 46' = 0.00206
 " " 40-07 = 9.809119
 " " 1017. = 3.007366
 656. = 2.816691

by chain meas 72.95

log. sin 85-51 = 9.722385
 fac = 0.277615
 " " 68-02 = 9.950010
 " 602.2 = 2.779741
 1017. = 3.007366

log. sin 91° 46' = 9.999796
 fac = 0.00206
 " " 48-07 = 9.871568
 log = 3.007366
 757.6 = 2.879440

sin 4° 13' = 8.937398
 " = 7.062602
 41-47 = 9.823680
 log 602.2 = 2.779741
 67.35 = 2.666028

sin 10° 48' = 9.222726
 ac = 0.772774
 log 80-58 = 9.994580
 log 11.53 = 1.061829
 60.77 = 1.783683

ac log 10-48' = 0.727274
 " " 80-58 = 9.994580
 (mas) log 759.8 = 2.880679
 60.60 ch = 4005. = 3.602053